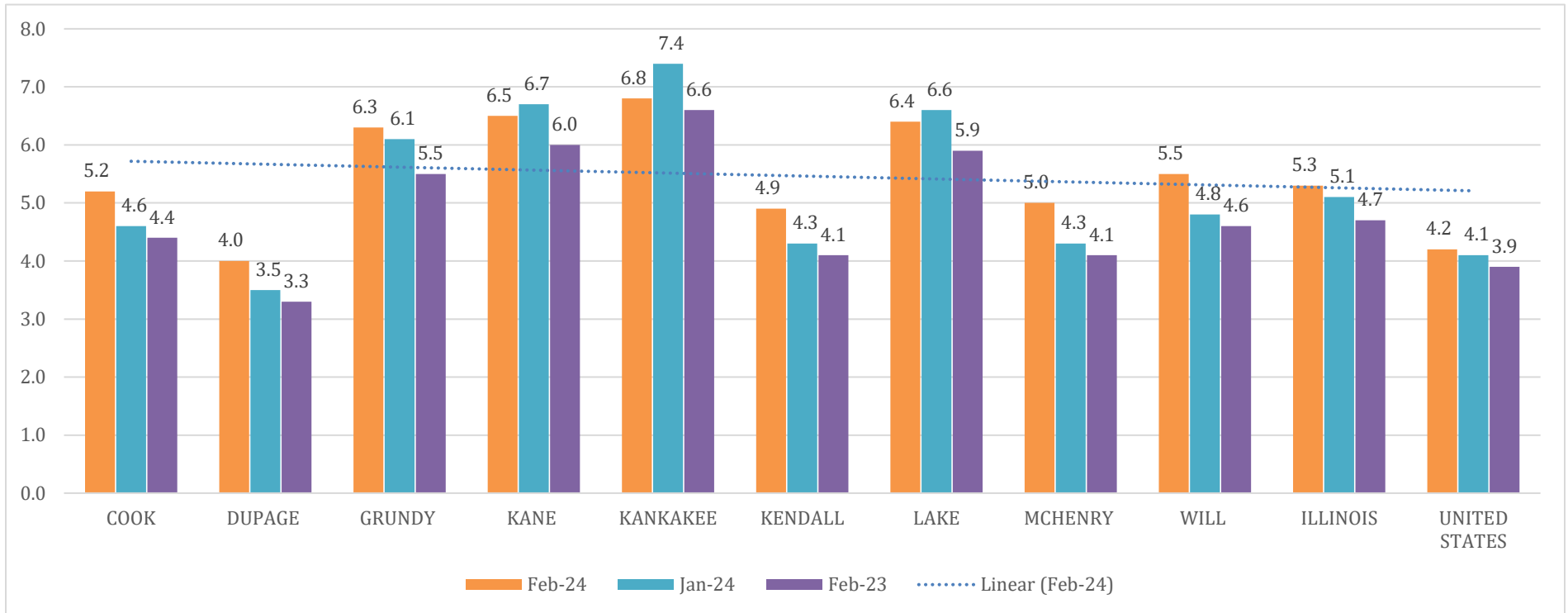




CURRENT UNEMPLOYMENT RATES CHICAGO METRO COUNTIES, ILLINOIS, *and* UNITED STATES



WILL COUNTY LABOR FORCE				
Month/Year	Unemployment Rate	Labor Force	Employed	Unemployed
February 2024	5.5	370,914	350,659	20,255
January 2024	4.8	368,785	350,901	17,884
February 2023	4.4	373,854	357,381	16,473

Source: Illinois Department of Employment Security - Local Area Unemployment Statistics (LAUS). *LAUS Program develops monthly and annual estimates of the labor force, employed, unemployed and the unemployment rate for the State, metropolitan areas, counties, and municipalities that have a population of at least 25,000.*