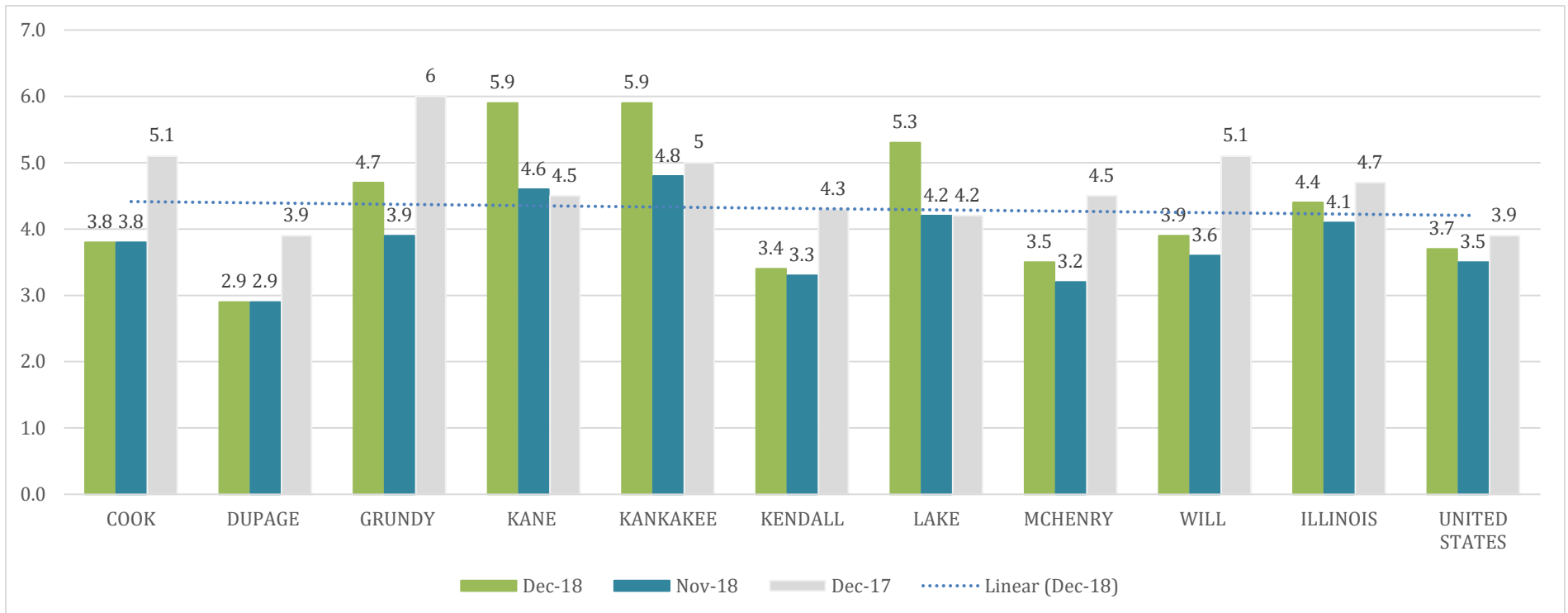


UNEMPLOYMENT RATES

CHICAGO METRO COUNTIES, ILLINOIS, and UNITED STATES



WILL COUNTY LABOR FORCE				
Month/Year	Unemployment Rate	Labor Force	Employed	Unemployed
December 2018	3.9	354,613	340,913	13,700
November 2018	3.6	357,620	344,683	12,937

Source: Illinois Department of Employment Security - Local Area Unemployment Statistics (LAUS). LAUS Program develops monthly and annual estimates of the labor force, employed, unemployed and the unemployment rate for the State, metropolitan areas, counties and municipalities that have a population of at least 25,000.